

Details and pricing for the trip can be found online at www.asiangeo.com. Please refer to our website for trip itinerary.

PERSONAL INFORMATION

Name as in passport: _____ Sex: _____

Passport Number: _____ Passport Expiry: _____

Nationality: _____ Email: _____

Mailing Address: _____ City: _____

State: _____ Country: _____ Postal Code: _____

Main Contact: _____ Alternative Contact: _____

The following members are eligible to a 10% discount:

Xplorer Member (Membership Number): _____

Serangoon Gardens Country Club (Membership Number): _____

Safra Photo Club (Membership Number): _____

Please indicate your point of embarkation:

Singapore (including all airfare, taxes and fuel surcharges)

Non-member Single: SG\$3,055/person **Non-member** Twin/double: SG\$2,680/person
 Member Single: SG\$2,750/person **Member** Twin/double: SG\$2,412/person

Delhi, India (including all airfare, taxes and fuel surcharges)

Non-member Single: SG\$2,455/person **Non-member** Twin/double: SG\$2,080/person
 Member Single: SG\$2,210/person **Member** Twin/double: SG\$1,872/person

Note: All prices exclude cost of visa application.

Expiry Date: _____ Signature: _____

Send your entries to: **Asian Geographic Magazines Pte Ltd**
[Himalayas Expedition 2008]
No.1 Syed Alwi Road #06-01
Singapore 207628

Or fax it to: +65 6291 2068

DEADLINE: 30 MAY 2008.
Slots are limited and are on a first-come-first-serve basis.

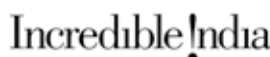
Organised by



Co-organised by



Supporting Tourism



Official Airline



Supported by



Giveaways Sponsors

